

Self-luminous G-elumic® License Plates for Automobiles, Motorcycles and Trucks



Increased safety and exclusivity with the self-luminous G-elumic® license plate

The on-going trendsetting technical development of self-luminous foils (EI-Foils) makes the construction of a completely new generation of license plates possible. The result is an optimized visibility resulting in more safety in traffic and an exclusive design.

This special license plate, developed by A. Sievers GmbH together with partners has met all the requirements of the German Federal Office for Motor Traffic and has received official authorization for road traffic. A general design certification (ABG Nr. K555) has been granted for the rear mounting on all vehicles in Germany. Applications for separate permits must be completed for other international markets.

The patented, high-tech license plate obviously differs from all other known systems and therefore, should not be confused with LED-lighted license plates, LED license plate frames or with rear-lighted plates.

The main parts of G-elumic® are a standard European aluminum plate, electrically luminescent foil and semi-transparent reflector foil. Using a special technology, these foils are directly laminated onto the aluminum plate which guarantees construction with the necessary durability and weather resistance.

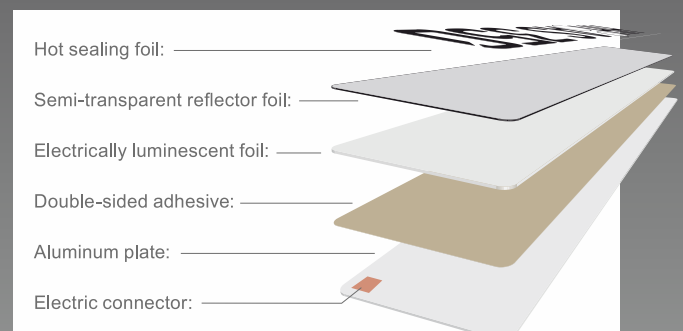
The electrical access with the wiring system voltage is managed through a 12V/24V inverter, which is attached to the license plate backside connector (ribbon cable).

The G-elumic® is light and flexible, thus it can be stamped just like customary license plate by every qualified cold processing workshop.

Currently, G-elumic® plates and fitting accessories can be ordered in the sizes 520x110 mm for automobiles and trucks, and 180x200 mm for Motorcycles. Other formats and sizes can be ordered.



www.gelumic.de





The special self-luminous system is bedded between the aluminum plate and the semi-transparent foil and ensures optimal lighting. The reflecting function of the license plate as well as the visibility by daylight is not affected. The semi-transparent foil is translucent and simultaneously reflects light.



Due to the dispensable license plate lighting, the G-elumic® construction enables optimal and reduced installation for distinguished custom bike designers and owners.

G-elumic®

The exclusive self-luminous license plate offers a multitude of advantages

- Homogenous, very uniform and bright license plate illumination
- No shadows due to abstract lighting or reflections
- Up to 50% better visibility especially in adverse weather situations such as fog, rain and snowfall
- Easy to recognize in all optical angles
- Low energy consumption
- Condense water does not cumulate as in closed LED systems
- Standard lighting can be used or omitted depending on authorization
- Outstanding exclusivity in general traffic and in comparison to standard vehicles
- Numerous design and construction possibilities for automobile and motorbike manufacturers
- Optimal and space-saving mounting on custom bikes
- The G-elumic® can be stamped with standard clapper dies
- Compatible with all standard license plate frames and for the extra developed G-elumic® aluminum carriers (G-elumic® product offer)
- Simple mounting with the enclosed installation instructions and supplies